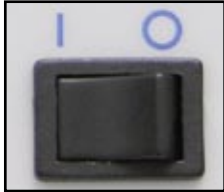


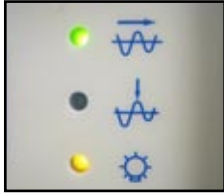
7. Attach the power cord to the jack in the top right corner of the aluminum case and plug it into a 110 volt outlet.



8. Turn on the **Strobo 21 LED** and the **Cam 21 DV** with the On/Off switches.



9. Check the foot switch to ensure it is calibrated. Move the switch from heel to toe position. If the lights on the Strobo 21 LED change as you move, then it is calibrated.



10. If the lights do not change then refer to the Operating Instructions Manual section 4.0 (Operations), #5 on pg 12 for full calibration Instructions.

11. After the foot switch is calibrated, select the Strobe button from the **Cam 21 DV** light selection.



12. Select the Rigid Scope from the scope selection.



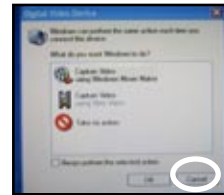
13. Place a laptop on top of the unit or on a nearby flat surface, then attach the **Cam 21 DV** cable to the laptop's firewire port and plug in the laptop to a 110V outlet.



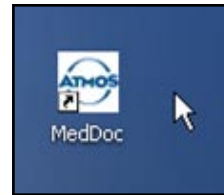
14. Connect the **MedDoc** foot switch to the USB port on the laptop. Make sure you always use the same USB port each time.



15. Turn on the laptop. When the digital video device screen comes up, select cancel.



16. Bring up the **MedDoc** software and follow the **Med Doc** user manual to begin the procedure.



Getting Started

1. Remove case carrier by pushing the two black buttons together.

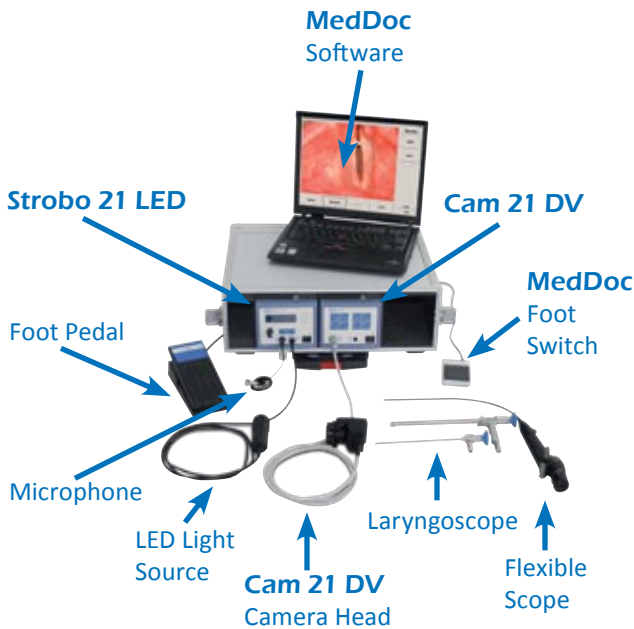


2. Remove case cover and lay the main unit on a flat surface.

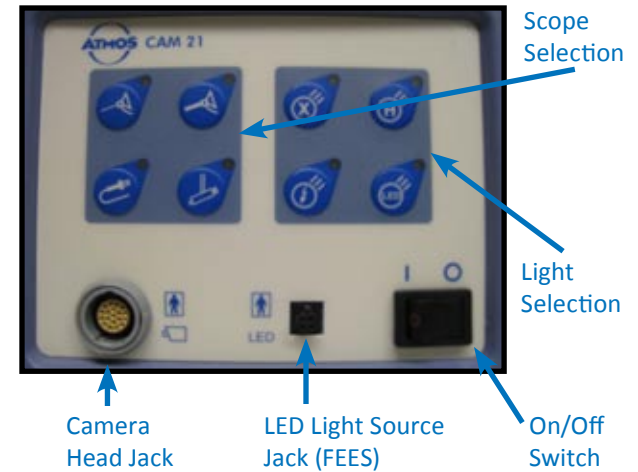
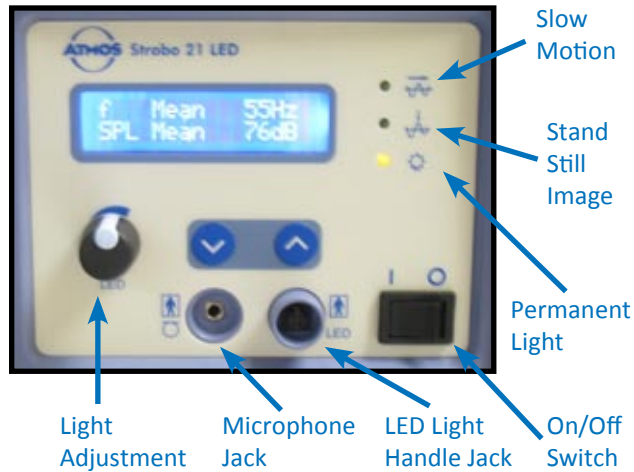
The power cord jack should be on the top right corner.

3. Remove materials from storage compartments (microphone, LED light source, camera head, **MedDoc** foot switch, foot pedal, scope, and power cord).

Knowing The Equipment



Setting up the **Strobe 21 LED** and the **Cam 21 DV**



1. Connect the camera head to the camera head jack found on the bottom left of the **Cam 21 DV**.



2. Connect the LED light source to the **Strobe 21** by attaching the cord to the LED light jack found on the bottom right.



3. Connect the microphone to the **Strobe 21** by attaching the cord to the microphone jack found on the bottom left.



4. Connect the camera head to the scope by moving the silver knob counterclockwise, (when looking at the front of the camera head), then lock it by turning in opposite direction.



5. Connect the LED light source to the scope by pushing down on the top of the light source. Slide it onto the side of the scope and release the top of light source.



6. Attach the microphone to the scope two inches away from the handle so that the black side faces the patient.

